

EnergyConnect

Out Of Hours Construction Notification

December 2024

ElecNOR Australia (formerly SecureEnergy) has been contracted by Transgrid to deliver part of EnergyConnect with the construction of 700km of new power lines from the SA border to the regional energy hub of Wagga Wagga. The project will connect the electrical grids of New South Wales, South Australia, and Victoria, improving reliability of our nation's energy supply.

Construction Activities

The EnergyConnect project team are continuing to advance construction activities on the Eastern section of the alignment between Wagga Wagga and Dinawan, near Bundure.

The approved hours of construction works are:

- 7am to 6pm Monday to Friday
- 8am to 1pm Saturdays
- At no time on Sundays and NSW Public Holidays.

Work outside approved construction hours

Works outside approved construction hours are planned for the period December 2024 to December 2025, to ensure works are carried out safely and to minimise disruption to the community.

- **Foundation works and concrete pours will take place weather permitting Monday to Sunday at 4.30am to 7.00pm.**
- **All other works will take place, weather permitting Monday to Sunday 7.00am to 7.00pm (including Public Holidays)**

Overhead transmission line construction activities

The scope of overhead transmission line construction activities between Wagga Wagga and Dinawan includes:

- Foundation works
- Foundation concrete pours
- Assembly and Erection of towers
- Stringing

How could this impact you?

Generally, tower assembly and erection activities have been identified as having an inaudible noise risk due to the distance of sensitive receivers from the proposed work locations. However, where there are identified sensitive receivers including landholders from the proposed works, standard hours of work will apply.

All work will be carried out in line with the project's Conditions of Approval and Construction Environmental Plan.

How we're managing impacts

Site light, noise and vibration

Machinery and equipment will generate some light, noise and vibration. We will make every effort to minimise impacts by:

- Minimising the number of machines/vehicles to be used.
- Ensuring all machinery and vehicles are maintained and serviced.
- Turning off machinery and vehicles when not in use.
- Directing any temporary lighting down and away from homes.
- Fitting equipment with devices to minimise noise.

Traffic impacts

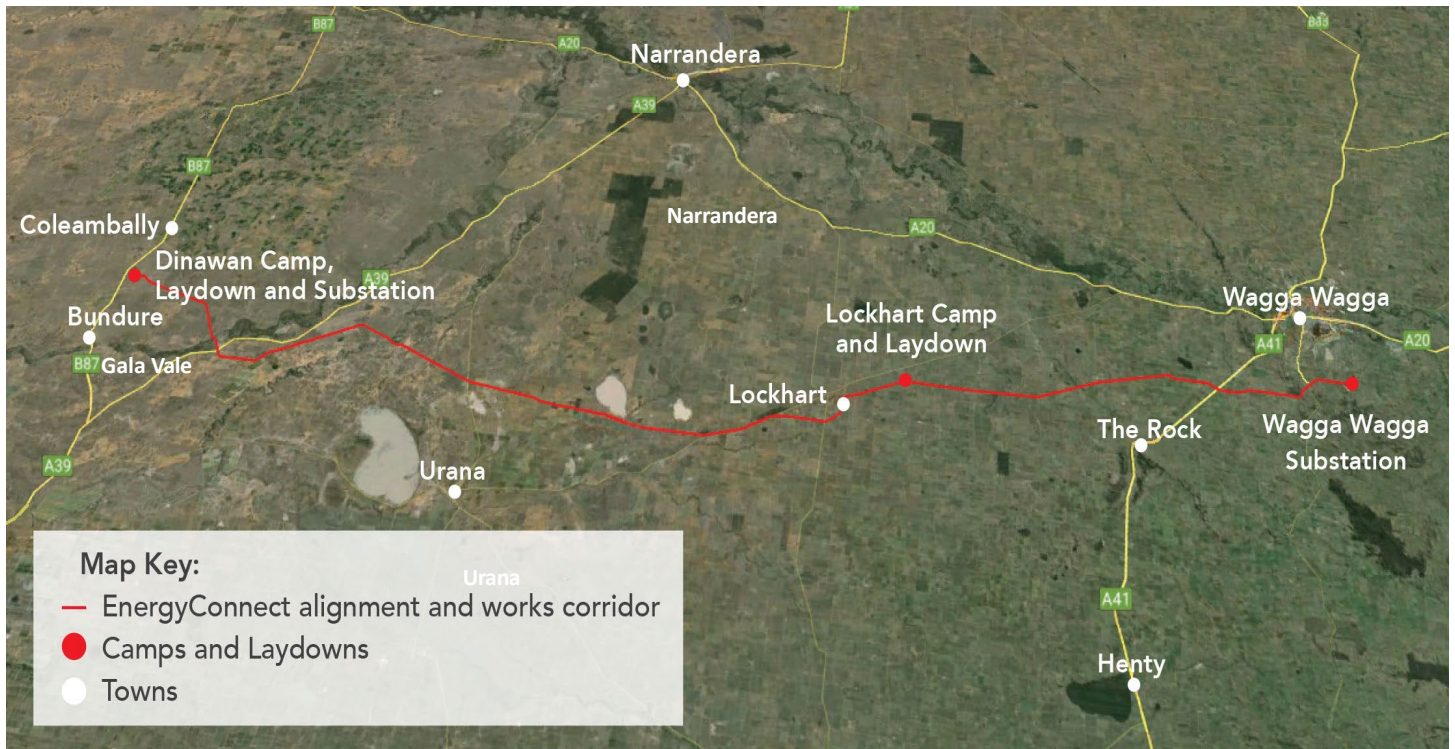
Temporary traffic changes may be in place to ensure the work zone is safe. Please keep to the sign posted speed limits, follow the direction of traffic controllers, and drive to the conditions such as slowing down in wet weather and poor visibility.

Types of equipment

The type of plant and equipment you can expect to see at various stages of general construction are concrete pumps, diesel generators, piling rig with impact hammer, Piling Drill Rig, pressure washers, welding equipment, Skid steer, lighting towers (solar), water carts, agitators, graders, rollers, mulchers, excavators, semi-trailers, telehandlers, bobcats, crane trucks, Bob Cat, concrete trucks, rollers, tractors, heavy-lift cranes, mobile cranes and additional light vehicles.

The type of **specialized** equipment you can expect to see for stringing activities include steel cables, draw wire, conductor wire, insulators, elevated work platforms, rough terrain cranes, telehandlers, trucks and light vehicles.

Map showing location of the works



Keep Updated on EnergyConnect

Elecnor Australia is committed to working with landowners and communities through the construction of EnergyConnect. There are several ways to contact the project team. Contact the Project Community and Stakeholder Engagement Team on:

1800 49 06 66 (free call) pec.community@elecnor.es secureenergyjv.com.au/projects/energyconnect
Please write to us at: Elecnor Australia 1/22 Edward Street, Wagga Wagga NSW 2650
Subscribe to our project e-newsletter at www.transgrid.com.au/energyconnect

To provide any feedback on the way we engage visit www.secureenergyjv.com.au/tell-us-what-you-think/

