

EnergyConnect

Out of Hours Construction Notification

September 2024

Elecnor Australia (formerly SecureEnergy) has been contracted by Transgrid to deliver part of EnergyConnect with the construction of 700km of new power lines from the SA border to the regional energy hub of Wagga Wagga. The project will connect the electrical grids of New South Wales, South Australia, and Victoria, improving reliability of our nation's energy supply.

Work outside of approved construction hours

Works are progressing at the Wagga Wagga Substation on Ashfords Road, Gregadoo.

The approved hours of construction work at the Substation are: 7am to 7pm Monday to Sunday including public holidays.

Works outside approved construction hours are planned for the period Friday 20 September 2024 to Saturday 28 September 2024, to ensure works are carried out safely and to minimise disruption to the community.

Works will take place, weather permitting: Monday to Sunday 6am to 8pm

The scope of construction work is summarised in the table below:

Location and Activity	Description	Work dates*
Construction activities at the Wagga Wagga Substation located between Ashfords Road and Boiling Down Road.	<ul style="list-style-type: none">• Pre-assembly and erection lattice Structures• Installation of Earthgrid• Installation of high voltage equipment• Stringing of High Voltage Conductors• Fencing realignment	20-28 September 2024

How could this impact you?

You can expect to see construction activities at the Wagga Wagga Substation in the final quarter of 2024. There will be an increased number of construction vehicles during the work. All work will be carried out in line with the project's Conditions of Approval and Construction Environmental Plan.

How we're managing impacts

Traffic Impacts

There may be an increase in road noise levels due to construction traffic, but this will only occur during daytime and any noise impacts are temporary.

Please use care sharing roads with construction vehicles as they have high axle loads and greater turning circles.

Our work is likely to generate some dust. To reduce the impact for nearby residents we'll be providing continuous dust suppression, where practical.

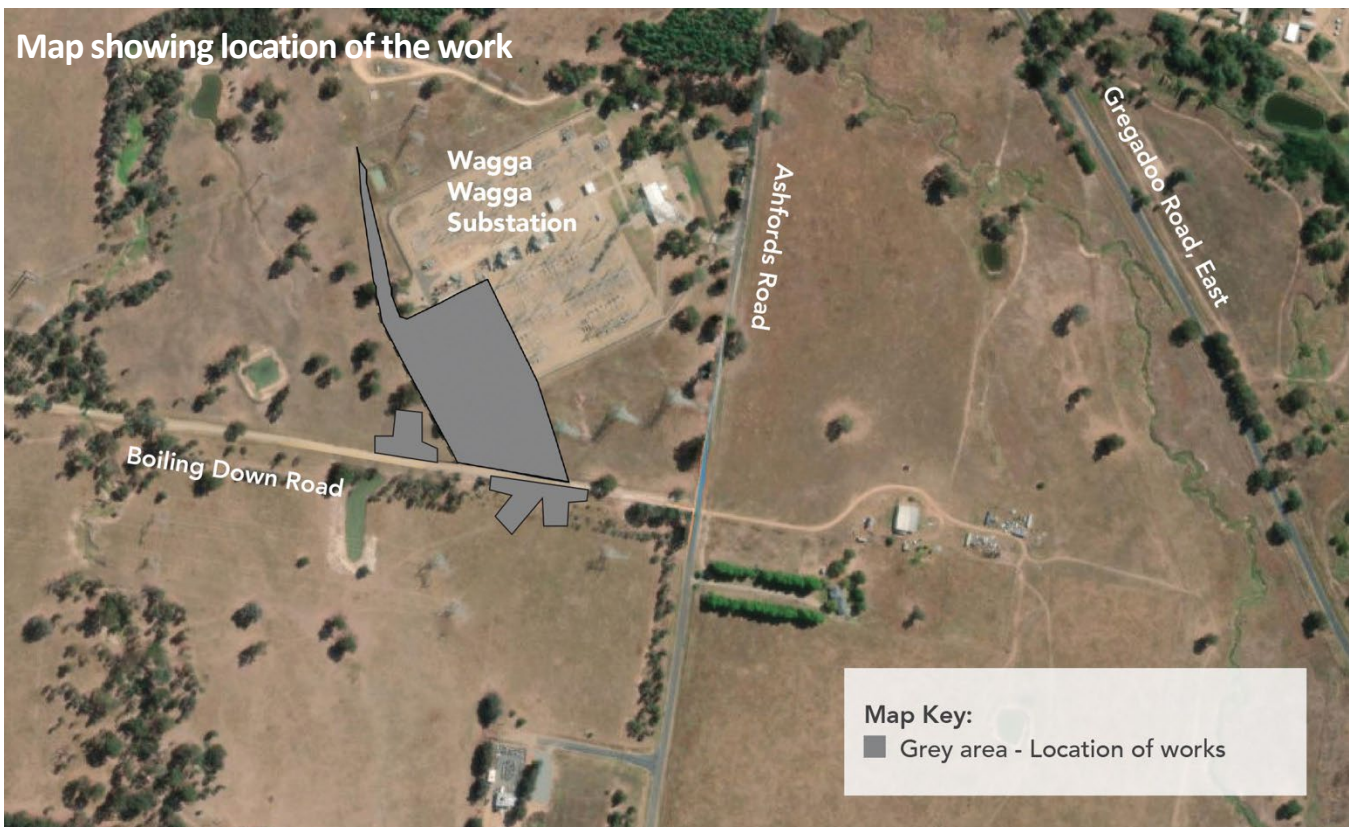
Site light, noise and vibration

The type of plant and equipment you can expect to see includes knuckle booms, a straight boom, a 70-tonne mobile crane, a 22-tonne mobile crane, one welder, telehandlers and additional light vehicles.

Machinery and equipment will generate some light, noise and vibration. We will make every effort to minimise impacts by:

- Minimising the number of machines/vehicles to be used.
- Ensuring all machinery and vehicles are maintained and serviced.
- Turning off machinery and vehicles when not in use.
- Directing any temporary lighting down and away from homes.
- Fitting equipment with devices to minimise noise.
- Monitoring noise so we can manage any potential impacts and change our work as required.

Map showing location of the work



More information

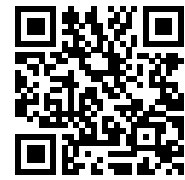
For further information about the project visit www.secureenergyjv.com.au or access our Fact Sheets using the QR codes:



Fact Sheet
Substations



Fact Sheet
Transmission Lines



Fact Sheet
Danubio tower

Keep Updated on EnergyConnect

Elecnor Australia is committed to working with landowners and communities through the construction of EnergyConnect.

There are several ways to contact the project team. Contact the Project Community and Stakeholder Engagement Team on:

1800 49 06 66 (free call) pec.community@elecnor.es
secureenergyjv.com.au/projects/energyconnect

Subscribe to our project e-newsletter at
www.transgrid.com.au/energyconnect