

EnergyConnect

Construction Notification

July 2024

Elecnor Australia (formerly SecureEnergy) has been contracted by Transgrid to deliver part of EnergyConnect with the construction of 700km of new power lines from the SA border to the regional energy hub of Wagga Wagga. The project will connect the electrical grids of New South Wales, South Australia, and Victoria, improving reliability of our nation’s energy supply.

Construction Activities

As part of the nation building EnergyConnect project, we are progressing various construction activities on the Eastern section of the project on multiple sites along the alignment between Wagga Wagga and Dinawan, near Bundure NSW.

Upcoming work

A summary of the construction activities planned between Wagga Wagga and Dinawan, is outlined in the table below. Standard working hours are between 7am to 6pm Monday to Friday and 8am to 1pm Saturday, weather permitting.

Location and Activity	Description	Work dates*
Access points and Access tracks between Dinawan (Bundure) and Wagga Wagga.	<ul style="list-style-type: none"> • Clearing and grubbing • Minor earthworks • Drainage installation 	Ongoing to late 2024
Assembly and erection of transmission towers within easements between Dinawan (Bundure) and Wagga Wagga.	Overhead transmission lines construction activities along the easement include: <ul style="list-style-type: none"> • Clearing and grubbing • Minor earthworks • Foundation drilling for transmission towers • Foundation concrete pours 	Ongoing to 2025
Construction activities between Dinawan Substation (Bundure, near Coleambally).	<ul style="list-style-type: none"> • Clearing and grubbing • Topsoil stripping • Bulk earthworks • Internal road construction • Substation construction 	Ongoing to 2025

Location and Activity	Description	Work dates*
Camp upgrade at Lockhart Camp (Lockhart, County Boundary Road).	Additional camp demountables to be transported to the camp by road.	Ongoing to August 2024
Construction activities at the Wagga Wagga Substation	<ul style="list-style-type: none"> • Clearing and grubbing • Topsoil stripping • Bulk earthworks • Drainage activities • Drilling foundations • Replacement and upgrade of high voltage equipment. • Substation expansion 	Ongoing to 2025
Impacted traffic construction and water access routes in the Wagga Wagga LGA	<p><u>State Roads:</u></p> <p>Sturt Highway Hammond Avenue Edward Street Colin Knott Drive Olympic Highway Hume Highway</p> <p><u>Regional Roads:</u></p> <p>Holbrook Road Lockhart Road Tumbarumba Road Bourke Street Docker Street</p> <p><u>Local Roads</u></p> <p>Ashfords Road Boiling Down Road Brunskill Road (with restrictions) Dunns Road (light vehicles) Elizabeth Avenue (with restrictions) Glenfield Road Gregadoo East Road Gregadoo Road (light vehicles) Hanging Rock Road Inglewood Road Koorringal Road Lake Albert Road (with restrictions) Lloyd Road Mitchell Road (with restrictions) Old Station Road Oxley Bridge Road Pearson Street Plumpton Road Red Hill Road Rowan Road (with restrictions) Somervilles Road</p>	Ongoing to 2025

	<p>The Rock-Narrandera Road Uranquinty Cross Road Vincent Road Yarragundry Street Key Street Ryan Street Bakers Lane Bullenbong Road Kyeamba Avenue Redbank Road (with restrictions)</p>	
--	---	--

*Subject to change

How could this impact you?

You can expect to see construction activities at the Wagga Wagga Substation and the assembly and erection of towers as main construction activities progress around Wagga Wagga in the final quarter of 2024. There will be an increased number of construction vehicles on the road across the project area during the work.

Noise and air quality within approved limits

The road noise levels generated by construction traffic will not exceed the standard decibel noise levels for local roads. The predicted road noise levels and associated increases will only occur during the day-time period and any noise impacts are temporary. It is not anticipated that dust impacts will occur on sealed roads because of construction vehicle movements.

Types of equipment

The type of plant and equipment you can expect to see at various stages of construction are graders, rollers, mulchers, excavators, concrete trucks, tractors and mobile cranes.

All work will be carried out in line with the project's Conditions of Approval and Construction Environmental Plan.

Traffic Impacts

Please use care sharing roads with construction vehicles as they have high axle loads and greater turning circles. Motorists are advised to stay under the speed limit and drive to the conditions, such as slowing down in wet weather and poor visibility.

Water point access

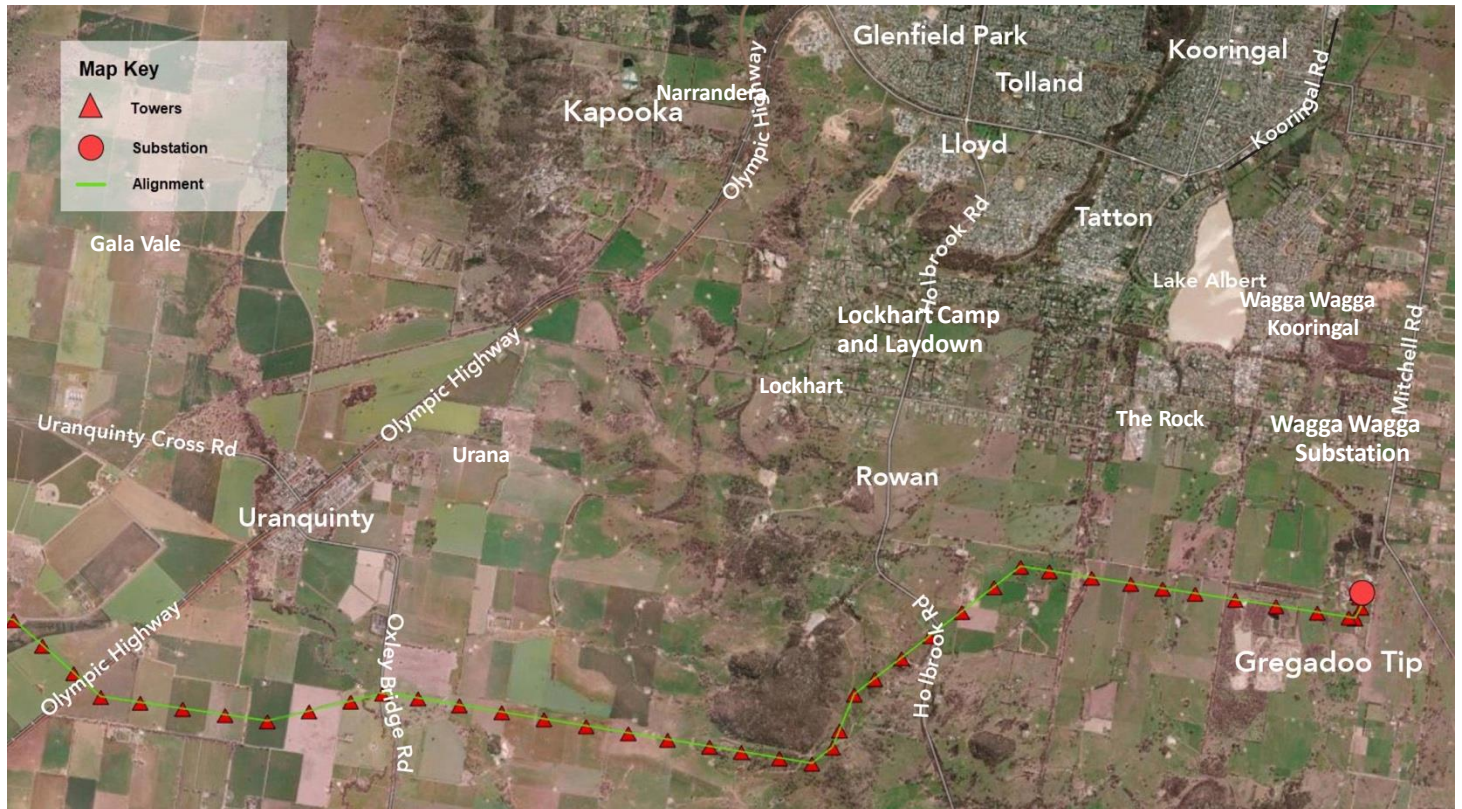
The approved roads that can be used by construction traffic for the water supply point located on Plumpton Road will be Ashfords Road, Mitchell Road, Gregadoo Road, Lake Albert Road and Brunskill Road.

The establishment and use of water supply points are required in the overall construction program to support road upgrades and pre-construction minor works, and to facilitate the commencement of substantial construction.

Contact Us

We are committed to working with communities through the construction of EnergyConnect. Please contact the **Project Community and Stakeholder Engagement Team** on 1800 49 06 66 (free call).

Map showing location of the work.



Fact Sheets

For further information about the project visit www.secureenergyjv.com.au or access our Fact Sheets using the QR codes:



EnergyConnect Fact Sheet Substations



EnergyConnect Fact Sheet Overhead Transmission Lines

Keep Updated on EnergyConnect

Elecnor Australia is committed to working with landowners and communities through the construction of EnergyConnect.

There are several ways to contact the project team. Contact the Project Community and Stakeholder Engagement Team on:

1800 49 06 66 (free call) pec.community@elecnor.es
secureenergyjv.com.au/projects/energyconnect

Subscribe to our project e-newsletter at
www.transgrid.com.au/energyconnect