

EnergyConnect

Construction Notification

July 2024

Elecnor Australia (formerly SecureEnergy) has been contracted by Transgrid to deliver part of EnergyConnect with the construction of 700km of new power lines from the SA border to the regional energy hub of Wagga Wagga. The project will connect the electrical grids of New South Wales, South Australia, and Victoria, improving reliability of our nation’s energy supply.

Construction Activities

As part of the nation building EnergyConnect project, we have commenced conductor stringing activities on the Red Cliffs section of the project at multiple sites along the alignment between Buronga, NSW to Red Cliffs, Victoria. There are 79 pole structures on this line which is 24kms long.

Upcoming Out of Hours Work

A summary of the construction activities planned between Buronga and Red Cliffs is outlined in the table below. This work will take place during approved working hours which are **Monday to Sunday 6am to 6pm**, weather permitting.

Location and Activity	Description	
Assembly and erection of transmission structures within easements between Buronga, NSW to Red Cliffs, VIC.	Overhead transmission lines construction activities along the easement include: <ul style="list-style-type: none"> • Clearing and grubbing • Minor earthworks • Foundation drilling for transmission structures • Foundation concrete pours 	Complete
Stringing of conductors within easements between Buronga, NSW to Red Cliffs, VIC.	Stringing activities include: <ul style="list-style-type: none"> • Setting up of brake winch sites • Draw wire run out • Pulling out conductors • Termination of conductors • Clamping of conductors • Installing conductor spacers 	June to September 2024
Impacted traffic construction and water access routes in Red Cliffs	State roads: <ul style="list-style-type: none"> • Sturt Highway Local roads: <ul style="list-style-type: none"> • Dansons Road • Arumpo Road • Murray River Crossing 	June to September 2024

*Subject to change

How could this impact you

Noise and air quality

The road noise levels generated by construction traffic will not exceed the standard decibel noise levels for local roads. The predicted road noise levels and associated increases will only occur during the day-time period and any noise impacts are temporary.

It is not anticipated that dust impacts will occur on sealed roads because of construction vehicle movements.

Types of equipment

The type of plant and equipment you can expect to see at various stages of construction are graders, rollers, mulchers, excavators, concrete trucks, tractors, and mobile cranes.

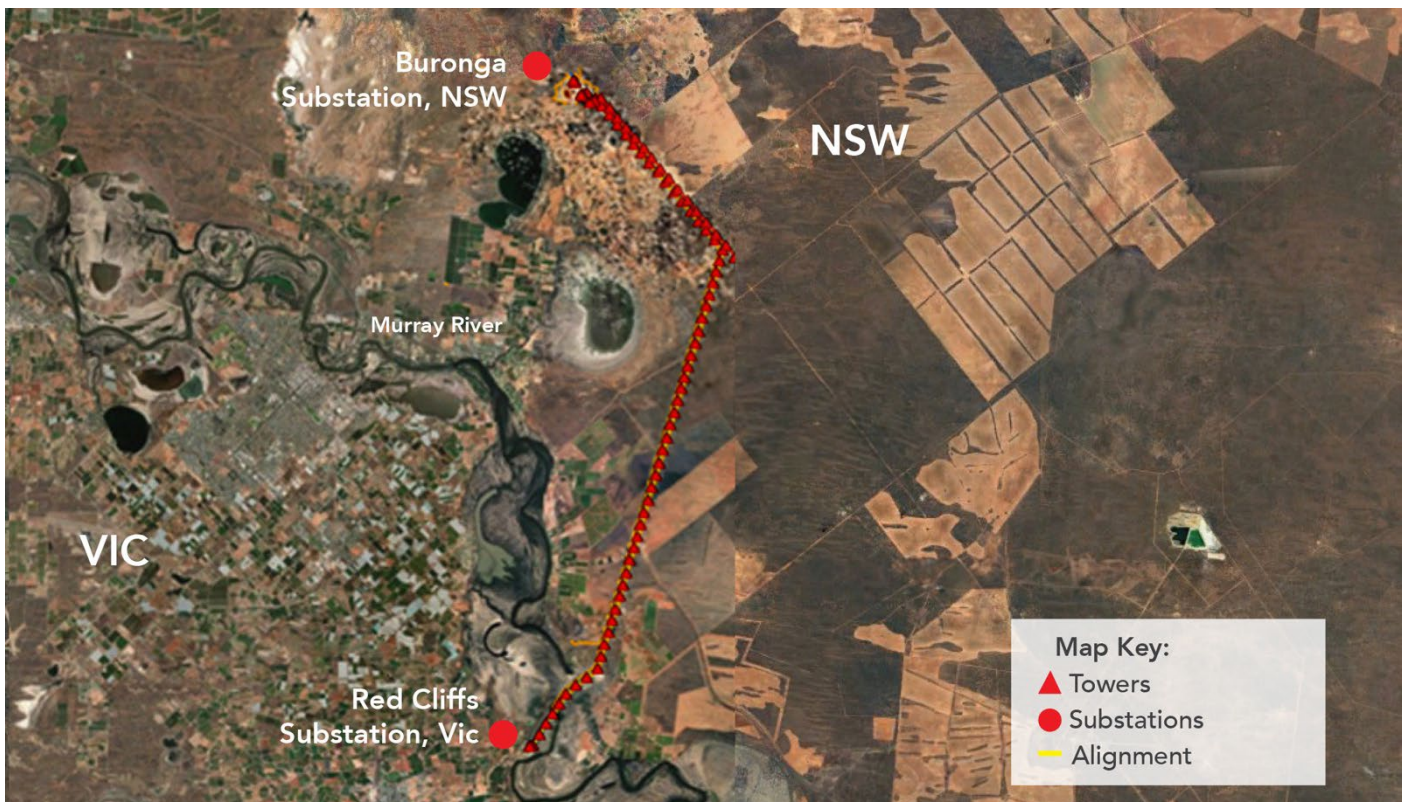
All work will be carried out in line with the project's Conditions of Approval and Construction Environmental Plan.

Traffic impacts

There will be an increased number of construction vehicles on the road across the project area during our work. Temporary traffic changes may be in place to ensure the work zone is safe. Please keep to the sign posted speed limits, follow the direction of traffic controllers, and drive to the conditions such as slowing down in wet weather and poor visibility.

Contact Us

We are committed to working with communities through the construction of EnergyConnect. Please contact the [Project Community and Stakeholder Engagement Team](#) on **1800 49 06 66** (free call) or email pec.community@elecnor.es.



Keep Updated on EnergyConnect

Elecnor Australia is committed to working with landowners and communities through the construction of EnergyConnect. There are several ways to contact the project team. Contact the Project Community and Stakeholder Engagement Team on:

1800 49 06 66 (free call) pec.community@elecnor.es
secureenergyjv.com.au/projects/energyconnect

Subscribe to our project e-newsletter at
www.transgrid.com.au/energyconnect