

EnergyConnect

Construction Notification

April 2024

Elecnor Australia (formerly SecureEnergy) has been contracted by Transgrid to deliver part of EnergyConnect with the construction of 700km of new power lines from the SA border to the regional energy hub of Wagga Wagga. The project will connect the electrical grids of New South Wales, South Australia, and Victoria, improving reliability of our nation’s energy supply.

Construction Activities

As part of the nation building EnergyConnect project, we have commenced various construction activities on the Eastern section of the project on multiple sites along the alignment between Wagga Wagga and Dinawan (near Coleambally), NSW.

Upcoming work

A summary of the construction activities planned between Wagga Wagga and Dinawan which may affect your property, is outlined in the table below. Works will occur during standard working hours between **7am to 6pm Monday to Friday and 8am to 1pm Saturday**, weather permitting.

Table 1: Summary of planned construction activities

Location and Activity	Description	Work dates*
Access points and Access tracks between Dinawan (Bundure) and Wagga Wagga.	<ul style="list-style-type: none"> • Clearing and grubbing • Minor earthworks • Drainage installation 	Ongoing to June 2024
Assembly and erection of transmission towers within easements between Dinawan (Bundure) and Wagga Wagga.	<p>Overhead transmission lines construction activities along the easement include:</p> <ul style="list-style-type: none"> • Clearing and grubbing • Minor earthworks • Foundation drilling for transmission towers • Foundation concrete pours 	Ongoing to late 2024
Construction activities between Dinawan Substation (Bundure, near Coleambally).	<ul style="list-style-type: none"> • Clearing and grubbing • Topsoil stripping • Bulk earthworks • Internal road construction • Substation construction 	Ongoing to late April 2024

Location and Activity	Description	Work dates*
Construction activities between Dinawan Camp and Laydown area (Bundure, near Coleambally).	Camp establishment: <ul style="list-style-type: none"> • Foundation installation • Building modules installation • Camp facilities • Walkways • IT and communications Construction of laydown area 	Ongoing to late April 2024
Camp upgrade at Lockhart Camp (Lockhart, County Boundary Road).	Additional camp demountables to be transported to the camp by road.	March 2024 to June 2024

*Subject to change

Access Points

Project EnergyConnect’s crews and subcontractors are establishing vehicle access and egress points for safe vehicle entry and exit from roads to facilitate construction of the transmission line in the vicinity of your property.

The activities listed in Table 1 will occur on multiple work sites between Wagga Wagga and Dinawan. Traffic management will be in place to manage traffic movements for safety reasons.

How could this impact you?

Plant and equipment

The type of plant and equipment you can expect to see at various stages of the construction are graders, rollers, mulchers, excavators, concrete trucks, tractors, and mobile cranes. All construction activities will be carried out in accordance with our Management Plans, which are available online www.transgrid.com.au/projects-innovation/energyconnect.

Dust

Project EnergyConnect will provide continuous dust suppression mitigation measures during the construction activities in accordance with our environmental approvals.

Traffic

Please use care sharing roads with construction vehicles as they have high axle loads and greater turning circles. Motorists are advised to stay under the speed limit and drive to the conditions, such as slowing down in wet weather and poor visibility.

Ongoing landholder notifications

As work continues in the construction corridor, there will be an increase in construction personnel accessing the work areas. As identified in landholders’ Property Management Plans, once these construction activities commence, we will not be notifying landholders every time we access their properties. However, the project team remains committed to engaging with landholders, offering regular updates on the construction progress. All construction activities will be carried out in accordance with the Property Management Plans, Property Advice Statements, and the Biosecurity Management Plans.

Contact Us

For any matters relating to land access please contact your dedicated land access officer:

Murray Mangelsdorf: 0490 425 096

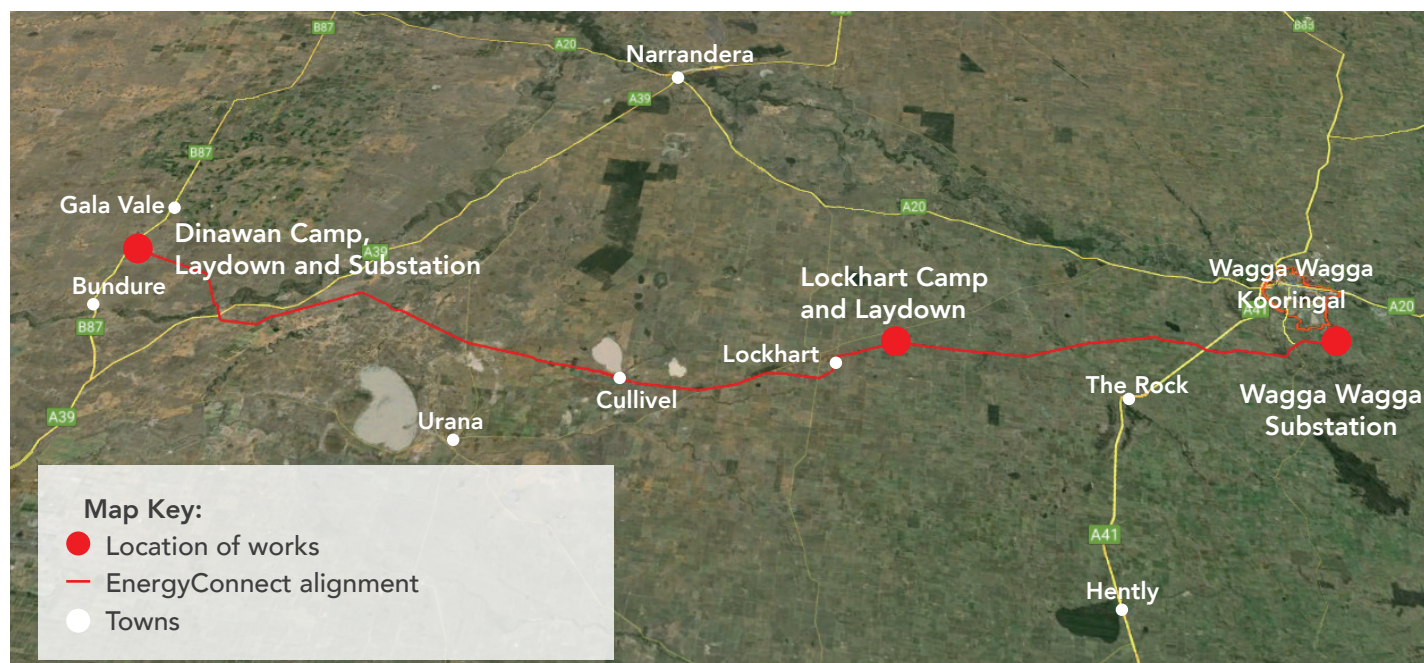
John Trahair: 0490 425 092

Graham Meers: 0428 620 943 or the

Project Community and Stakeholder Engagement

Team: 1800 49 06 66 (free call)

Map showing location of the work.



Fact Sheets

For further information about the project visit www.transgrid.com.au/energyconnect or access our fact sheets using the QR codes:



EnergyConnect
Factsheet
Construction



EnergyConnect
Factsheet
Substation



EnergyConnect
Factsheet
Transmission towers

Keep Updated on EnergyConnect

Elecnor Australia is committed to working with landowners and communities through the construction of EnergyConnect. There are several ways to contact the project team. Contact the Project Community and Stakeholder Engagement Team on:

1800 49 06 66 (free call)
pec.community@elecnor.es
secureenergyjv.com.au/projects/energyconnect

Subscribe to our project e-newsletter at
www.transgrid.com.au/energyconnect